

Figure 1 Flight trajectories with sites overlain on 1:1,000,000 topographic map

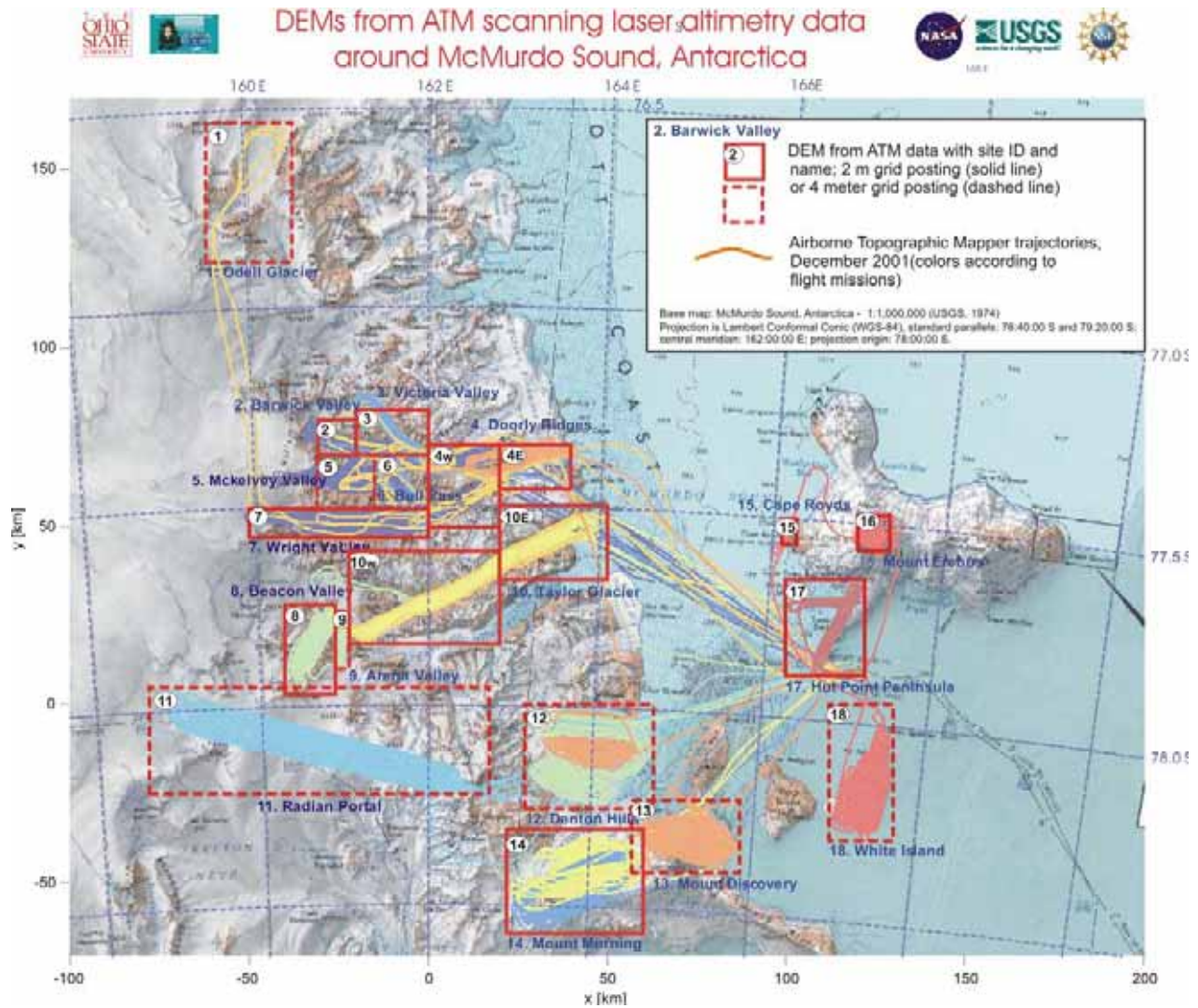


Table 1. List of sites linked to detailed site reports

<div><div></div></div>	DEM site 2m grid	<div><div></div></div>	DEM site 4m grid
2	<a href="#">Barwick Valley</a>	1	<a href="#">Odell Glacier</a>
3	<a href="#">Victoria and Barwick Valleys</a>	11	<a href="#">Radian Glacier - Portal</a>
4 W, E	<a href="#">Mount Doorly Ridge</a> <a href="#">Victoria, Greenwood, Clark and Wright Valleys</a>	12	<a href="#">Denton Hills</a>
5	<a href="#">McKelvey and Balham Valleys</a>	13	<a href="#">Mount Discovery</a>
6	<a href="#">Bull Pass and Victoria Valley</a>	18	<a href="#">White Island</a>
7	<a href="#">Wright Valley</a>		
8	<a href="#">Beacon Valley</a>		
9	<a href="#">Arena Valley</a>		
10 W, E	<a href="#">Taylor and Pearse Valleys</a>		
14	<a href="#">Mount Morning</a>		
15	<a href="#">Cape Royds Rockery</a>		
16	<a href="#">Mount Erebus</a>		
17	<a href="#">Hut Point Peninsula and Erebus Ice Tongue</a>		