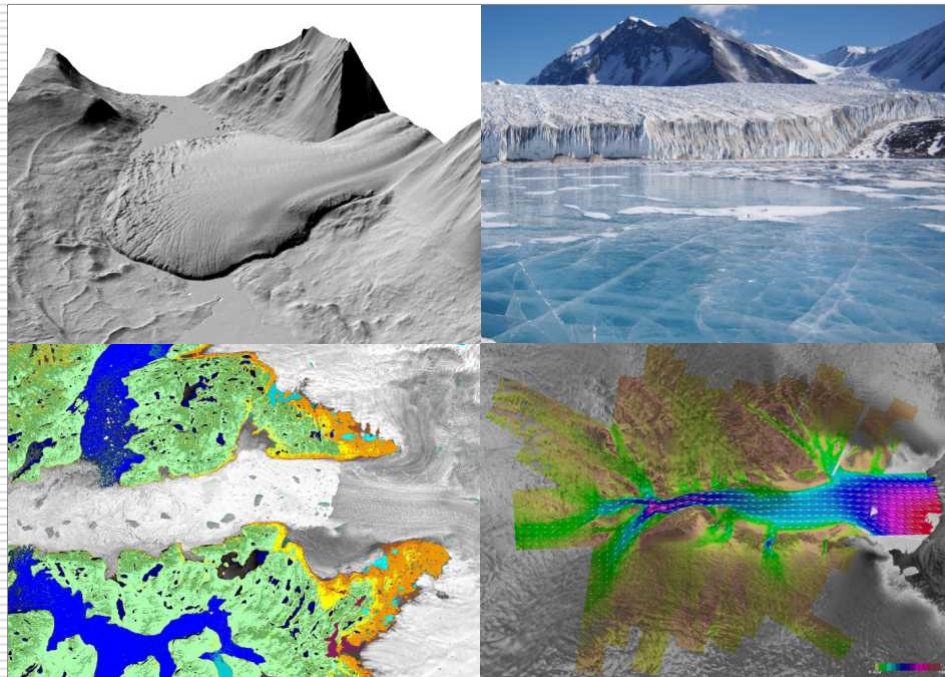
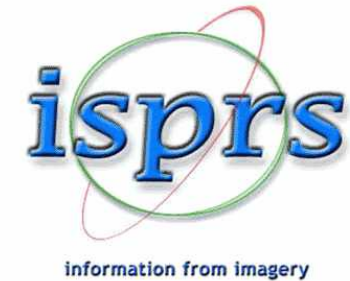


International Society for Photogrammetry and Remote Sensing (ISPRS)



Bea Csatho
Byrd Polar Research Center,
Columbus, Ohio USA

Introducing ISPRS: The Society



- ❑ ISPRS = International Society for Photogrammetry and Remote Sensing
- ❑ International Society for Photogrammetry (ISP) was founded in 1910, remote sensing was included in the name in 1980
- ❑ Mission: promoting international cooperation for the advancement of photogrammetry, remote sensing and spatial information systems
- ❑ 103 Ordinary, 13 Associate and 9 Regional Members. Ordinary and associate members are scientific and/or technical organizations representing geographic areas (usually national professional societies), regional members represent multinational professional associations



GENERAL ASSEMBLY

90 National Member Organizations
11 Associate Member Societies
12 Regional Member Associations

2004-2008

Decisions and Funding

60 Sustaining Members

COUNCIL

UK, TURKEY, CHINA,
AUSTRALIA,
SWITZERLAND, USA

FINANCIAL COMMISSION
COMMUNICATIONS:

Journal; Highlights; Home Page; Book Series

AD HOC COMMITTEE - STANDARDS

PERMANENT COMMITTEES:

ISAC; IPAC; ICORSE; CIPA

Policy, Execution,
Management,
Coordination and Directives

Technical Commissions

I
FRANCE

1 2 3 4 5 6 7

ICWG I/V

II
AUSTRIA

1 2 3 4 5 6 7

ICWG II/V

III
GERMANY

1 2 3 4 5

ICWG III/V

IV
INDIA

1 2 3 4 5 6 7 8 9

ICWG IV/VII

V
GERMANY

1 2 3 4 5 6

ICWG V/I

VI
JAPAN

1 2 3 4 5

VII
NETHERLANDS

1 2 3 4 5 6 7

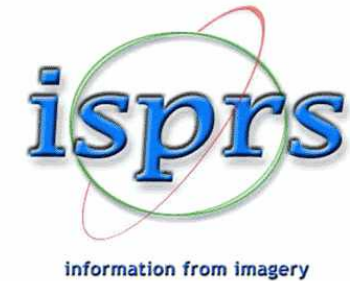
ICWG VII/IV

VIII
ISRAEL

1 2 3 4 5 6 7 8 9 10 11 12

Working Groups

Introducing ISPRS: Technical Commissions



COMMISSION I

Image Data Acquisition - Sensors
and Platforms



FRANCE

COMMISSION II

Theory and Concepts of Spatio-temporal Data
Handling and Information



AUSTRIA

COMMISSION III

Photogrammetric
Computer Vision



GERMANY

COMMISSION IV

Geodatabases
and Digital Mapping



INDIA



COMMISSION V

Close-Range Sensing:
Analysis and
Applications



GERMANY

COMMISSION VI

Education and Outreach



JAPAN

COMMISSION VII

Thematic Processing, Modeling and Analysis of
Remotely Sensed Data



NETHERLANDS

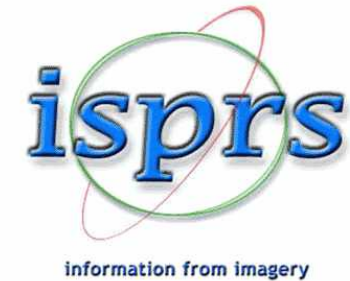
COMMISSION VIII

Remote Sensing
Applications
and Policies



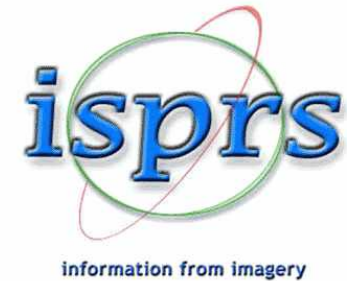
ISRAEL

Introducing ISPRS: Connections and Memberships



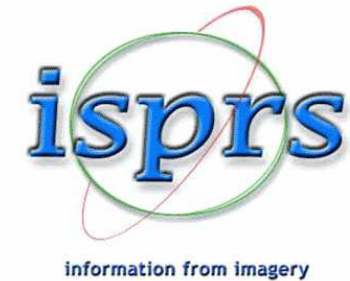
- ❑ ISPRS is associated with a large number of international organizations and societies, e.g., UNESCO, ISO, European Association of Remote Sensing Laboratories (EARSeL)
- ❑ ISPRS is a member of ICSU since 1994 and ISPRS has recently joined ICSU's GeoUnions (IUGG, IUSS, IUGS, IGS) as the fifth member society
- ❑ Sustaining members of ISPRS include NASA, SPOT Image, International Institute for Aerospace Survey and Earth Sciences (ITC) , Lockheed Martin Corporation and many others

Ongoing IPY Related Activities in ISPRS



- ❑ A new working group on *Polar Research* has been established in 2004
- ❑ ISPRS has suggested *Polar Research* as a new research scheme for ICSU's GeoUnions
- ❑ ISPRS is currently developing IPY proposal ideas and it has already endorsed a few IPY proposals

Suggested ISPRS contributions to IPY



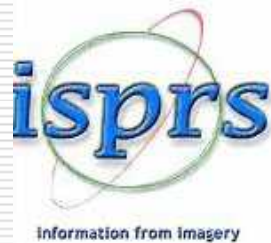
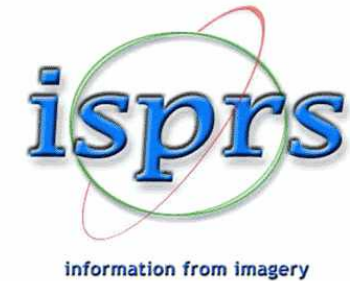
- Suggested ISPRS focus areas:
 - Coordinated satellite imaging campaigns
 - Spatial-temporal data management, especially for handling large image data sets;
Example: international collaboration for **integrating historical and contemporary polar image data sets** (aerial photography, satellite imagery, etc.) into a uniform, state-of-the-art data system with advanced spatial-temporal data mining capacities
 - ISPRS participation in the work of the Observation Systems Subcommittee
 - Outreach and education related to remote sensing applications related to IPY

ISPRS WG VIII 8: Polar and Alpine Research (2004-2008)

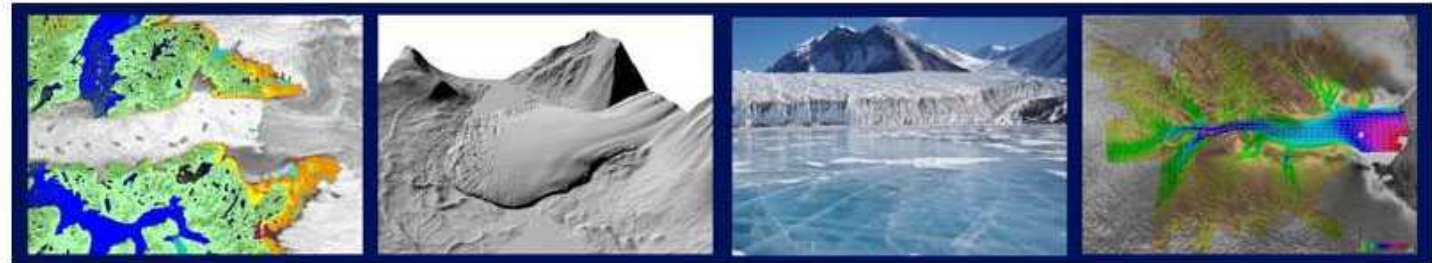


- ❑ **Commission VIII: Remote Sensing Applications and Policies**
- ❑ **Officers:**
 - Bea Csatho (chair, USA), Marc D'Iorio (co-chair, Canada), Honxing Liu (secretary, USA), Petri Pellikka (regional coordinator, Finland), Xiao Cheng (regional coordinator, China)
- ❑ **Terms of references:**
 - Identifying and conducting remote sensing initiatives supporting the International Polar Year (2007-2008)
 - Improving the retrieval of geophysical parameters relevant to the different elements of the cryosphere
 - Developing strategies and algorithms for assimilating remotely sensed data in models of polar processes
 - Developing long-term records and studying on-going changes in polar and alpine regions, for example changes in terrestrial polar ecosystems, ice sheet and glacier mass balance, and sea-ice cover

Please visit ISPRS on the Web: www.isprs.org
Follow the link to WG VIII/8 for information on Polar
and Alpine Research related activities



**International Society for Photogrammetry and Remote Sensing
Commission VIII - Remote Sensing Applications and Policies
Working Group VIII / 8- Alpine and Polar Research, 2004 - 2008**



General Plan of Activities ■

Events ■

Performed tests, distributed datasets ■

WG Correspondence ■

Become a member ■

Letters to WG Members ■

Annual Reports ■

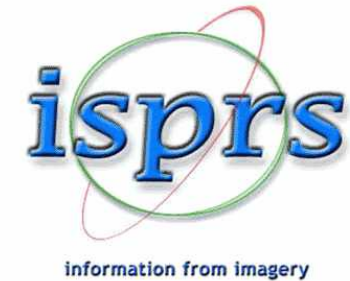
WG Members ■

Resources and links ■

Terms of Reference:

- Identifying and conducting remote sensing initiatives supporting the International Polar Year (2007-2008)
- Improving the retrieval of geophysical parameters relevant to the different elements of the cryosphere
- Developing strategies and algorithms for assimilating remotely sensed data in models of polar processes
- Developing long-term records and studying on-going changes in polar and alpine regions, for example changes in terrestrial polar ecosystems, ice sheet and glacier mass balance, and sea-ice cover

Polar Research Initiative for ICSU's GeoUnions Group



- GeoUnions = IUGG, IUGS, IUSS (geosciences), IGS (cartography), ISPRS (geospatial information)
- Interdisciplinary research themes of GeoUnions (one suggestions from each member society)
 - Position papers on:
 - Hazards*
 - Health*
 - Cities and Megacities*
 - Position paper is being developed on *Desertification*
 - *Polar Research* theme is proposed by ISPRS